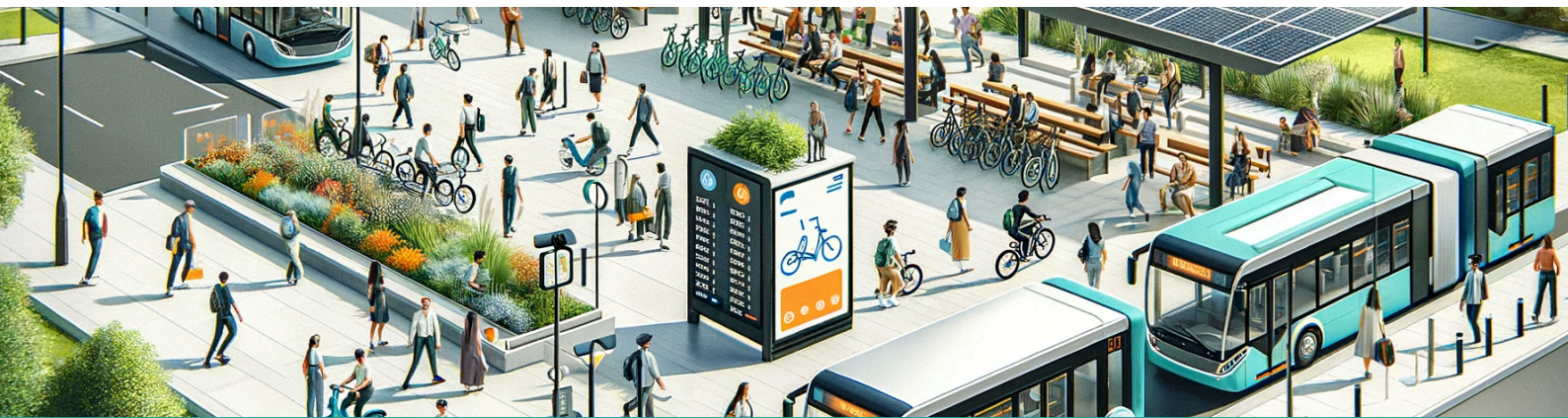


GREENMO WEBINAR



Mobility Hubs of the Future: Best Practices and Insights for Governance and Integration

Creating Efficient, Sustainable, and Inclusive Transport Solutions

Date

24 October 2024

Time

From 10:00 to 11:30 CEST

Speakers

1. Marla van der Horst (Province of Brabant - NL)
2. Johan Granberg (Gotheburg - SE, MOVE12 Horizon Project)
3. Alex Pazuchanics (Paris - FR)
4. Daniel Herrera (POLIS Network)



GREENMO

Interreg
Euro-MED



Co-funded by
the European Union

Agenda

| Time | Description | Speaker |
|---------------|--|----------|
| 10.00 - 10.10 | Welcome words, introduction to GREENMO & purpose of this webinar | UniWA |
| 10.10 - 10.15 | Governance structure, the Mobi-Mix approach | Bax |
| 10.15- 10.25 | Introduction of speakers | Speakers |
| 10.25 - 10.35 | Why? Importance of mobility hubs | Speakers |
| 10.35 - 10.45 | Who? Stakeholders | Speakers |
| 10.45 - 10.55 | What? Governance tools | Speakers |
| 10.55 - 11.10 | How? Organisational models | Speakers |
| 11.10 - 11.25 | Q&A Session | All |
| 11.25- 11.30 | Summary | Bax |

Content

Goal of this seminar

To gather **insights and best practices for governance of new mobility solutions**, such as mobility hubs. The experienced speakers will help the participants to understand how mobility hubs can be successfully implemented, including aspects such as public-private partnerships, regulations and the decision-making processes.

Questionnaire

Why? Importance of mobility hubs

Improving accessibility and connectivity, user convenience, and promoting sustainable public mobility, reducing private car use etc.

- Why are mobility hubs crucial for the future of urban mobility and public transit systems?

Who? Stakeholders

Key players in mobility hubs: public authorities, private sector, communities, and users.

- What are the responsibilities of stakeholders within a mobility hub?
- Who is responsible for initiating and maintaining a mobility hub?
- What are good practices for promoting cooperation between different mobility service providers within a single hub?

What? Governance tools

Instruments like regulations, incentives, and market-driven approaches.

- What regulatory tools exist public authorities can use to support the development of mobility hubs?
- What has your experience been so far? What particular challenges or lessons learned have derived that would be beneficial to share?

How? Organisational models

- What types of organisational models exist, e.g. public-private partnerships, fully public, fully private or hybrid structures?